



## Skye Lane Edgware £3,200 Per month

Davidson Frost-Wellings are pleased to present this beautifully decorated modern three bedroom end of terrace town house located in a family friendly neighbourhood close by to schools, parks, transport and shops.

On the ground floor property comprises of an entrance hall way which leads to a spacious kitchen/dining room, reception room and the added benefit of a cloakroom. To the first floor there are three good size bedrooms and the master has en suite bathroom. Completing the first floor is a family bathroom.

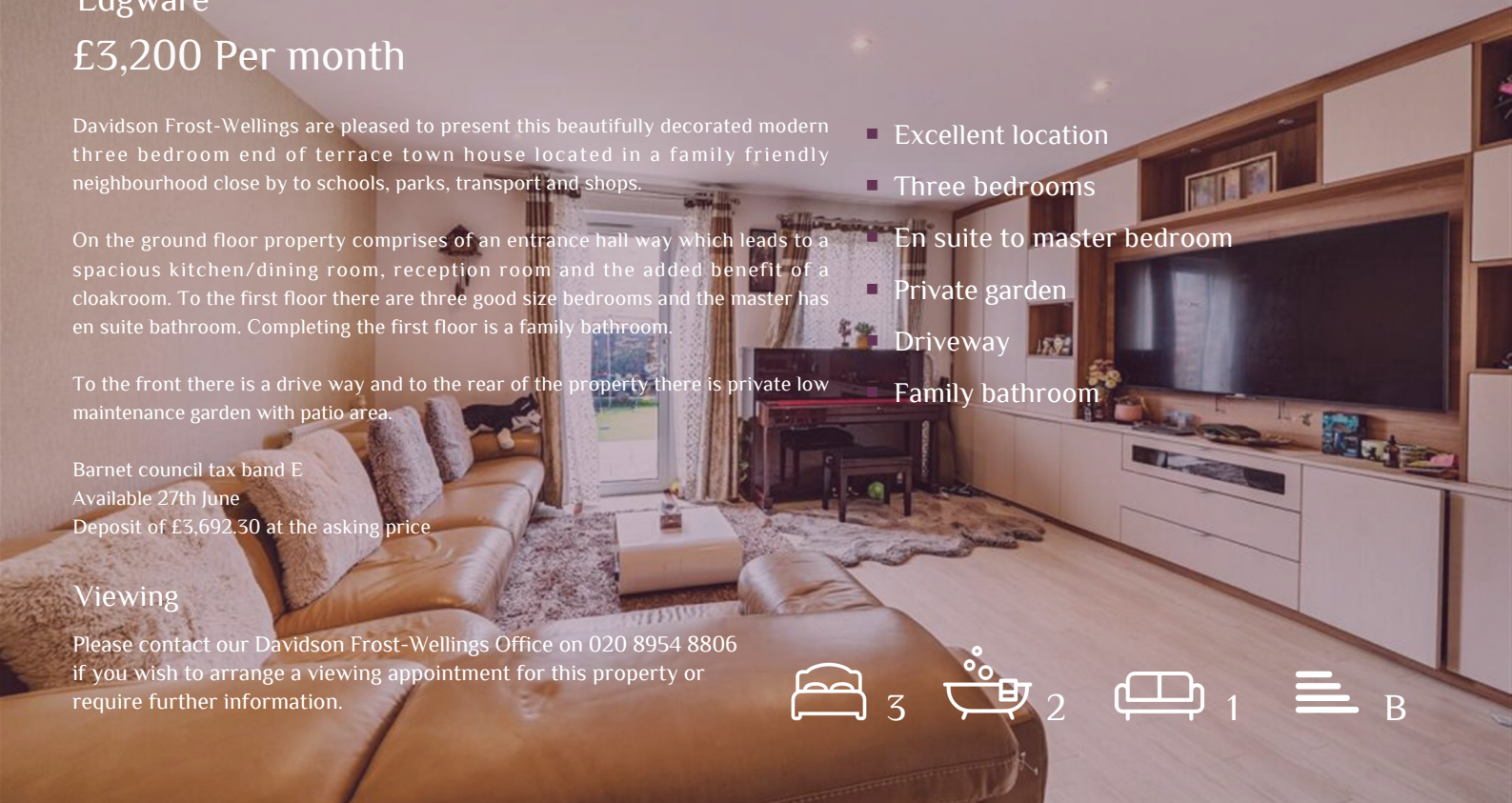
To the front there is a drive way and to the rear of the property there is private low maintenance garden with patio area.

Barnet council tax band E  
Available 27th June  
Deposit of £3,692.30 at the asking price

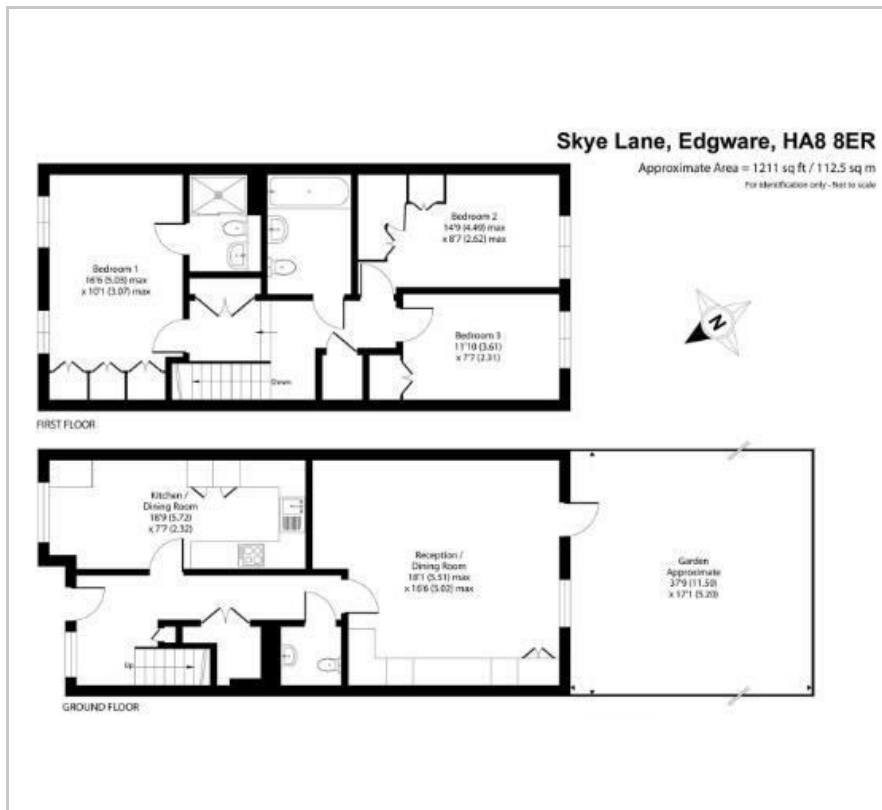
### Viewing

Please contact our Davidson Frost-Wellings Office on 020 8954 8806 if you wish to arrange a viewing appointment for this property or require further information.

- Excellent location
- Three bedrooms
- En suite to master bedroom
- Private garden
- Driveway
- Family bathroom



## Floor Plan

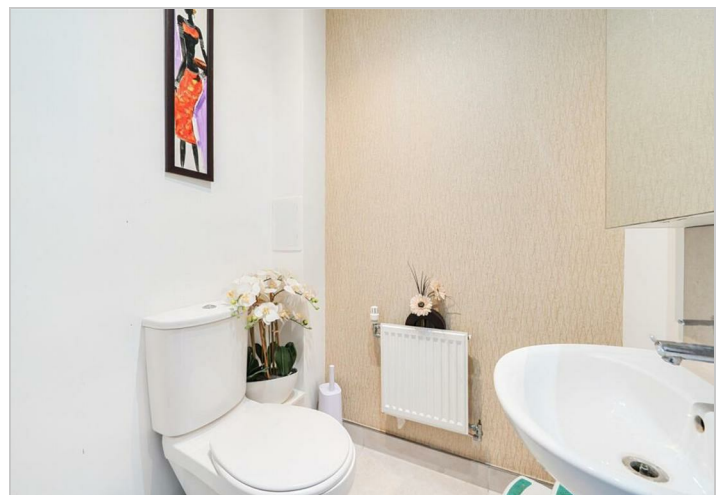
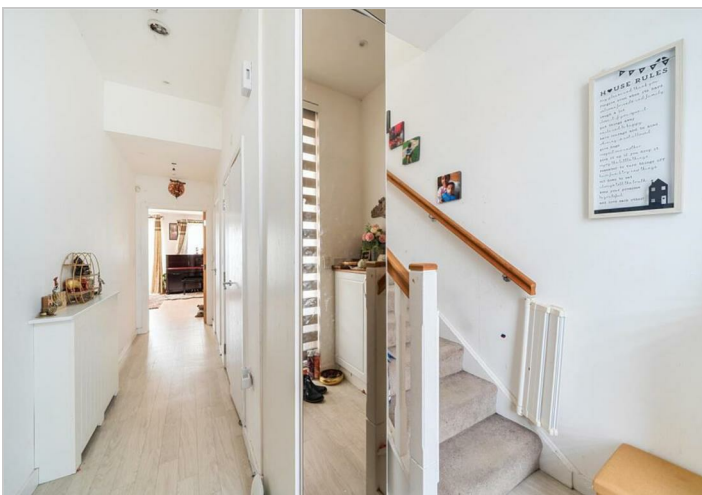
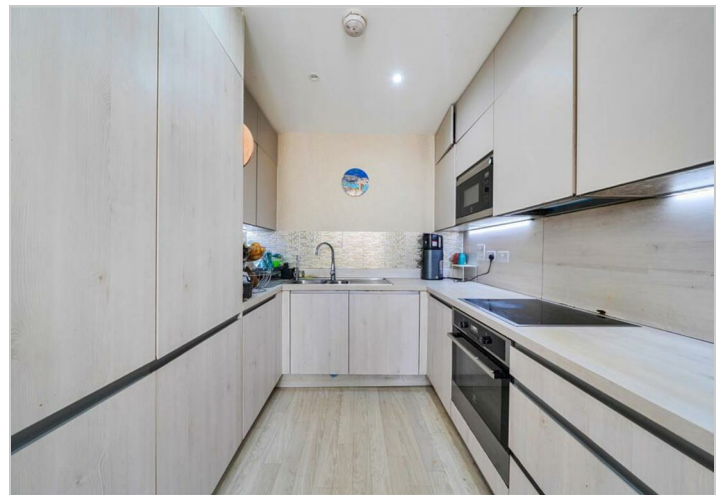


## Area Map



### Energy Efficiency Rating

	Current	Potential
Very energy efficient - lower running costs		
(92 plus) <b>A</b>		
(81-91) <b>B</b>		<b>91</b>
(69-80) <b>C</b>	<b>82</b>	
(55-68) <b>D</b>		
(39-54) <b>E</b>		
(21-38) <b>F</b>		
(1-20) <b>G</b>		
Not energy efficient - higher running costs		
<b>England &amp; Wales</b>	EU Directive 2002/91/EC	



These particulars, whilst believed to be accurate are set out as a general outline only for guidance and do not constitute any part of an offer or contract. Intending purchasers should not rely on them as statements of representation of fact, but must satisfy themselves by inspection or otherwise as to their accuracy. No person in this firm's employment has the authority to make or give any representation or warranty in respect of the property.